

HIGH DEEP
PUNCH
300X450MM

Eye-catching patterns for an
Impressive decor

SPENZA
ceramics

M A T T 300x450mm

It is everyone's favourite, because Spenza's Matt finish is like the new black.



Finish
MATT

300x450mm
WALLTILES



20001



20002



20003



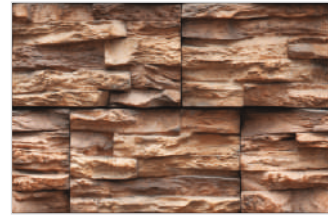
20004



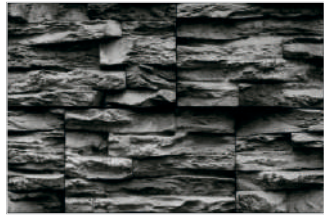
20005



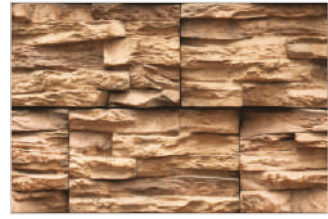
20006



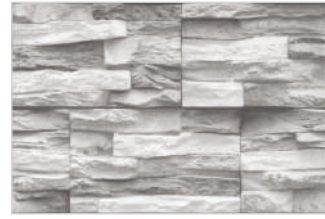
20021



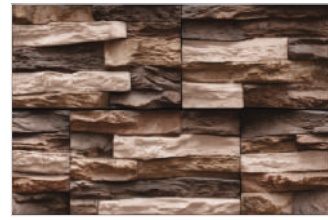
20022



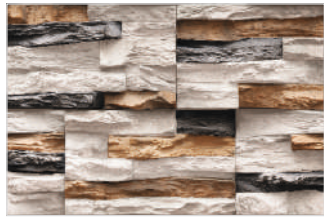
20023



20024



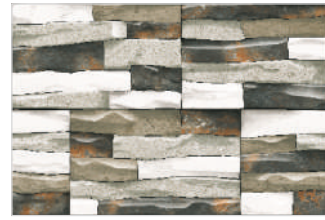
20025



20026



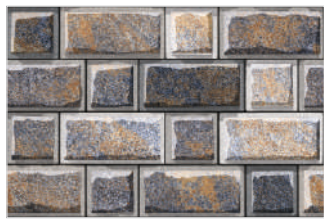
20027



20028



20041



20042



20043



20044



20045



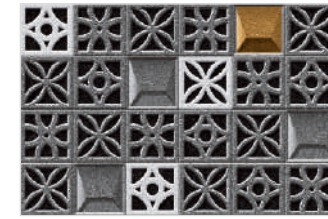
20046



20047

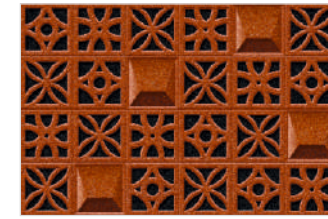


SPENZA[®]
ceramics



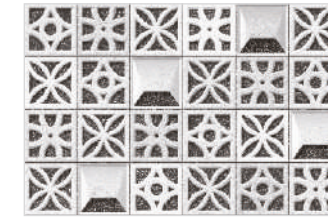
20061

R3



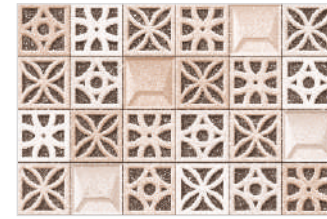
20062

R3



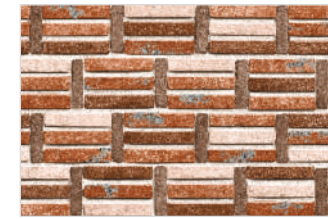
20063

R3



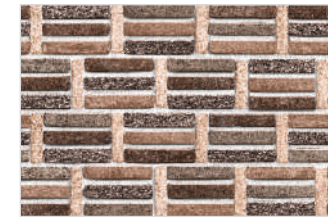
20064

R3



20071

R4



20072

R4



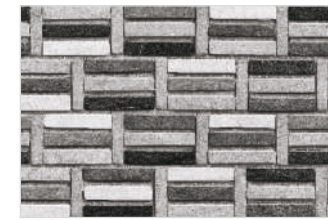
20073

R4



20074

R4



20075

R4



Preview of 20062

Finish
MATT

300x450mm
WALLTILES



20081



20082



20083



20084



20085



20086



20091



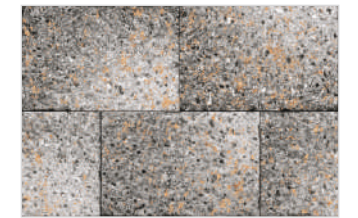
20092



20141



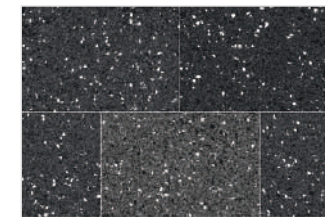
20142



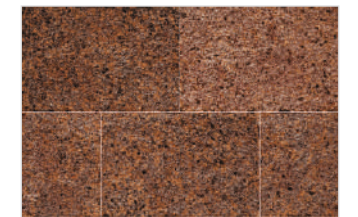
20143



20144



20145



20146



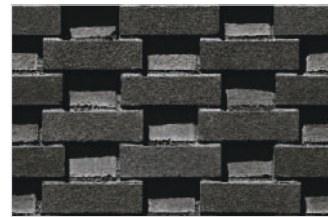
20101



20102



20103



20104



20105



20106



20121



20122



20123



20124



20125



Preview of 20145

Finish
MATT

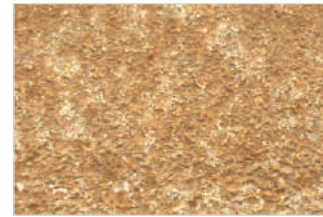
300x450mm
WALLTILES



20201-D



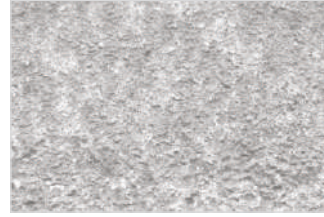
20201-HL



20202-D



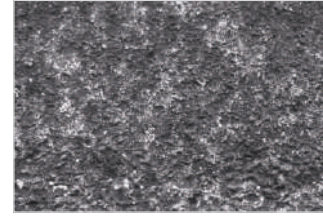
20202-HL



20203-D



20203-HL



20204-D



20204-HL



20205-D



20205-HL



20206-D



20206-HL



Random



Use 5mm
Space



High
Definition



Digital



Wall Tiles



20151



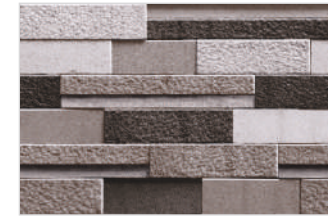
20152



20153



20154



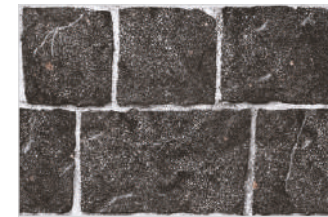
20155



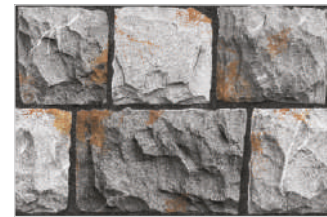
20156



20171



20172



20173



20174



20175



20176



20191



20192



20193



20194



Preview of 20154

Finish
MATT

300x450mm
WALLTILES



20241



20242



20243



20244



20245



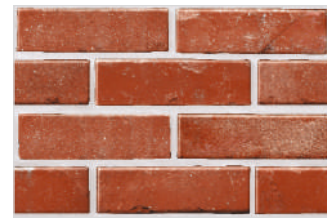
20246



20247



20248



20249



20250



20251



20261



20262



20263



20264



20265



20266



20281



20282



20283



20284



20285



20211



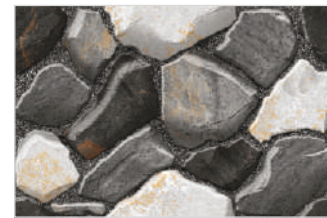
20212



20213



20214



20215



20231



20232



20233



20234



20235



20236



Preview of 20241

TECHNICAL SPECIFICATION OF WALL TILES

Characteristics	International Standard	COMPANY VALUE
1. Deviations in Length & Width	± 0.2%	± 0.08%
2. Deviations in Thickness	± 4.00%	± 3.00%
3. Straightness of Side	N.A.	N.A.
4. Rectengularity	± 0.15%	± 0.08%
5. Surface Quality	Min 95%	Min 95%
Physical Propertiles		
1. Water Absorption	≥ 10%	14-17%
2. Bending Strength	Avg. 15N/mm ²	17N Minimum
3. Scratch Hardness (Mons)	Min 3	Min 3
5. Surface Abrasion	N.A.	N.A.
6. Crazing	4 Cycle	4 Cycle
Chemical Properties		
7. Staining Resistance	Class 1	Passes
8. Household Chemicals	Class AA	Resistance to all, except hydrofluoric acid & it's compound
Thermal Properties		
Thermal Shock	N.A.	N.A.
Thermal Expansion	9x10 ⁻⁴ K ⁻¹	Complies

PACKING DETAIL

Product	Size	Pcs. / Box	Area / Box
	200x900mm	4	7.74 sq. fit
	200X600mm	6	7.74 sq. fit
	300X450mm	5	7.25 sq. fit
	300X600mm	5	9.68 sq. fit

Note: Colour Shown are as accurate as the limitations of the printing process will allow. Prospective customers are advised to inspect a sample of the tile before ordering. Every effort has been made to ensure the accuracy of the information given. However, the company reserve the right to change the specifications without prior notice. Sometime variations in shade or size being inherent to ceramic industry may occur. Before fixing, we advise you to follow the fixing instructions on the cartons of the tiles as no responsibility can be accepted by the company once the tiles have been fixed.

OUR ESTEEMED CUSTOMER

SR. NO.	NAME	SR. NO.	NAME
01	38 Brte-manali Army (PB)	27	Krish Infrastruction - Bhiwadi
02	Accme Height Kharar (PB)	28	Krish Vatika Flates - Bhiwadi
03	Affinity Greens-zirakpur (PB)	29	M P Goyal Industries - Rewari
04	Ahinsha Builders Pvt. Ltd. - Faridbad	30	Maharishi Markandeshwar University Tru - Pan India
05	Altura Height - Zirakpur (PB)	31	Mai Bhago Nursiing Collage - Tarantarn
06	Amyara City - Kharar (PB)	32	Mango Hotels-jammu (J&K)
07	Balaji Tower - Zirakpur (PB)	33	Manu Vatika School - Budhladha
08	Banwait Homes - Sas Nagar, Zirakpur	34	Maya Garden-zirakpur (PB)
09	Casa Homes - Kharar	35	Mother Teacher International School-Barnala (PB)
10	Chadnigarh International Airport	36	Omax City - Ludhiana
11	Chinar Apartments - Zirakpur (PB)	37	Patiala Heights - Patiala (PB)
12	Dayanand Medical Collage - Ludhiana	38	Pioneer Publicity Corporation Pvt Ltd - Delhi
13	Devraj Engineering Collage - Ferozpur	39	Plastochem India Pvt Ltd - Kolkata
14	Future City Developer Pvt Ltd - Mohali (PB)	40	Royal Manssion - zirakpur (PB)
15	Gautam Construction - Hosiyarpur	41	S. S. Group Pvt Ltd - Uргаon
16	Gkem Infratech Private - Gurgaon	42	Sbp Group - Pan India
17	Hermitage Towers - Zirakpur (PB)	43	Shishu Nikaten Senioer Secndry School - cheeka
18	Hermitage Towers - Zirakpur (PB)	44	Shiwalik City - kharar (PB)
19	Highland Park Home - Zirakpur	45	Smt Bharto Devi Educational Trust - Gurgaon
20	Hollywood Hights - Zirakpur (PB)	46	Sub Station Pspcl - Ludhiana (PB)
21	ITC Airport - Delhi	47	Sub Station Pspcl - Patiala (PB)
22	Judicial Court Complex - Mukerian (PB)	48	Sucheta Memorial Trust - Gurgaon
23	Judicial Court Complex - Ropar (PB)	49	Punjab Health Systems Corporation (PB)
24	Kangra Medical Collage - Kangra (HP)	50	TI Engineering Services - katihar, Bihar
25	Katihar Medicale Collage - Katihar, Bihar	51	HLV Film City Mohali (PB)
26	Khandelwal Multitrade (india) - Gurgaon	52	Sohana Hospital Cancer & Poor Wing Distt. Mohali (PB)